

ANIMALS YOU WILL FIND AT THE SANTA CRUZ COUNTY FAIR

The animal barns and Junior Fair Board small animal barn are a big hit with the younger kids. Don't forget to visit them both!



1. DO NOT TEASE THE ANIMALS
2. DO NOT FEED THE ANIMALS
3. DO NOT PET OR TOUCH THE ANIMALS
4. When in the barns, use inside voices. The livestock and humans are trying to win a contest. Be courteous and respectful.
5. Upon exiting the barns, PLEASE WASH YOUR HANDS! Bathrooms and wash stations are located near the barns and throughout the grounds, too.

LIVESTOCK

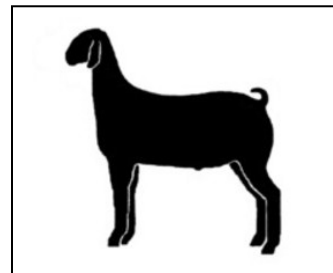
Livestock are domestic animals raised for their working ability or for their value as a source of food and other products. Livestock came to Santa Cruz County with the earliest settlers. The soil, climate and availability of food have all contributed to the growth of this industry. Today livestock are as important to our livelihood as they were to the early settlers and maybe even more so.

RUMINANTS: Goats, Sheep, & Cattle are all in the ruminant family. The special name they have is due to the make up of their stomach. Animals in this class are very different than any other animal. They have four stomachs and have no teeth on the upper jaw. Many times as you walk through the barns you will see these animals “**chewing their cud**”. The “cud” is re-chewing of food. If you did not know what they were doing you may mistake them for chewing gum. The reason that they have to re-chew their food is because of the special stomach. These animals spend most of their time chewing their food so that it can easily be digested.

ANIMAL FACTS

GOATS

1. Buck- male goat
2. Doe- female goat
3. Wether- altered male goat
4. Kid- a goat under the age of 6 months
5. Kidding- giving birth to their young
6. Udder- milk gland where their milk comes from
7. Gestation: 5 months



- Goats are ruminants having 4 stomachs and chew a cud.
- Most births are usually twin or triplets. Though singles and quadruplets are common. This is called a litter.
- Goats give milk for human consumption and to make cheese, ice cream, and yogurt to name a few things. **Kids** (baby goats) weight about 5 pounds at birth.

Here are 6 common breeds of goats:

1. Nubian: Any color with long pendulous ears with a roman nose.
2. Alpine: Can be any color with erect ears
3. Toggenburg: Brown, white stripes on face with erect ears.
4. Oberhasli: Red brown with black stripes on face and erect ears.
5. South African Boer: White with brown on neck and face with floppy ears. These goats usually go to market for meat.
6. Lamancha Any color with very short ears, there are two types of ears, the very, very short ears are called "gopher" ears and the longer ones are called "cookie ears. This is the only breed developed in the United States.

At the Santa Cruz County Fair, we have Alpines, Lamanchas, Nubians, Toggenburgs, and Boer Goats in the barns, so look out for them!

SHEEP

1. Ram- male sheep
2. Ewe- female sheep
3. Lamb- young animal either sex
4. Wether- altered male

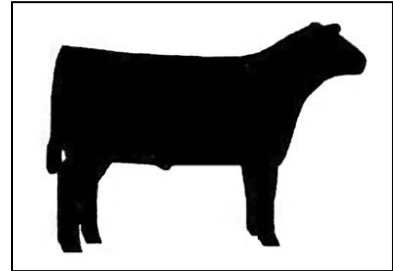


- Sheep are raised for both meat and wool.
- We shear sheep to harvest the wool. This is done once or twice a year.
- Gestation period is 4 months.
- Twins and single births are normal. Triplets are less common.
- When a ewe has a baby we call that **lambing**.
- Sheep are born with long tails, which are usually docked before they develop any nerves. This lessens the likelihood of contamination.
- White face breeds are usually wool breeds. Black face breeds are usually used for meat.
- Sheep are ruminants having 4 stomachs and chew a cud.
- Wool breeds are: Ramboulliet, Cheviot, Dorset, and Columbia.
- Meat breeds are: Suffolk, Hampshire, Corriedale, and Southdown.

You will see many Suffolk and Hampshire sheep in the barns! And look for the Southdown (mini) sheep in the Junior Fair Board Barn!

CATTLE

1. Bull- male, any age
2. Cow- female which has had a calf
3. Calf- male or female less than six months of age
4. Steer- castrated male (removal of testes)
5. Heifer- female which has not yet given birth



- Cattle are raised primarily for meat and milk.
- Gestation period is nine months.
- When a cow has a calf it is called calving.
- Single births are the norm, but the birth of twins occur occasionally.
- Bull calves are usually castrated unless kept for future breeding purposes.
- Cattle are ruminants and chew their cud.
- Meat breeds: Hereford, Angus, Charolais, Brahman, Gelviah, Beefmaster, Simmental and Shorthorn.
- Dairy breeds: Holstein, Guernsey and Jersey are the most common in this area, but there are many other breeds raised here.

EXAMPLES OF THE MANY AND VARIED USES OF BEEF

- | | | |
|-----------------|----------------------------|----------------------------|
| 1. Candle | 13. Plastics | 24. Bandages |
| 2. Cellophane | 14. Shoe cream | 25. Wallpaper |
| 3. Ceramics | 15. Shaving cream | 26. Sheetrock |
| 4. Cosmetics | 16. Soaps | 27. Emery boards |
| 5. Crayons | 17. Textiles | 28. Glues |
| 6. Deodorants | 18. Pet foods | 29. Artist's paint brushes |
| 7. Detergents | 19. Floor wax | 30. Photographic film |
| 8. Insecticides | 20. Livestock feed | 31. Combs |
| 9. Insulation | 21. Leather sporting goods | 32. Imitation ivory |
| 10. Linoleum | 22. Luggage | 33. Piano Keys |
| 11. Perfumes | 23. Boots & shoes | |
| 12. Paints | | |

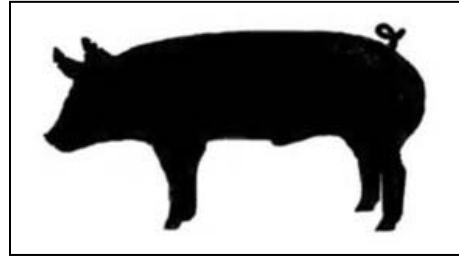
BEEF BY-PRODUCTS FOR MECHANICAL TYPES OF USES

1. Hydraulic brake fluid.
2. Airplane lubricants and runway foam.
3. Various machine oils and viscous fluids.
4. Steel ball bearings containing bone charcoal.
5. Car polishes and waxes.
6. Textiles for car upholstery.

99% OF EVERY BEEF ANIMAL IS USED FOR BEEF AND BY-PRODUCTS

SWINE

1. Swine, also referred to as: pigs or hogs
2. Herd- a group of swine
3. Boar- a male hog.
4. Sow- a female hog.
5. Pig- a very young pig, either sex.
6. Gilts- young female animals.
7. Barrow- altered male.

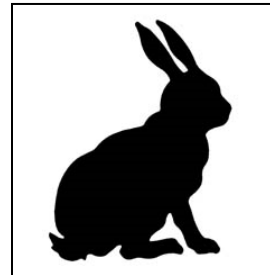


- Used for meat: Bacon, ham, sausage.
 - Hogs Come in many different colors: all white, all red, all black, black with 1 or 2 white front legs plus a belt of white, and white with black or red spots.
 - Pigs are shown at the fair loose in the showring with a cane to direct them.
 - The notches in some of the ears designate what farmer they belong to.
 - Gestation period is 3 months, 3 weeks and 3 days.
 - A pig usually weighs about 2 pounds at birth.
 - 10-12 in each litter.
 - When a sow gives birth we call that farrowing.
 - Pigs have a simple stomach, like man, and eat bakery waste (bread, rolls, etc.), barley, beans, carrots, beets, turnips, oats, peanuts, potatoes, rice, sunflower seeds, wheat, and some ground alfalfa.
 - Did you know pigs can run minutes after their born?
 - Pigs have the closest digestive system to a human than any other animal.
-

RABBITS

Many of us think of Peter Cottontail when we see a rabbit but the Cottontail is only one breed in the rabbit world. There are over 60 known rabbit breeds. They range in sizes and color. Rabbits are used for many things like their meat and fur. Not to mention, they make great pets!

1. Buck- male rabbit
2. Doe- female rabbit
3. Junior- young rabbit less than 6 months
4. Intermediate- rabbit at the age of 6-8 months
5. Senior- rabbit older than 6 months
6. Fryer- used for meat 10 weeks of age

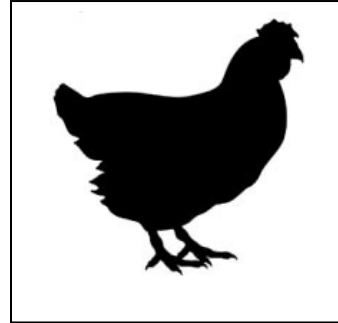


CHICKENS (Poultry)

Chickens come in many different colors and sizes. They typically live in a chicken coop (house). Feeding chicken oyster shells make their eggshells thick and healthy. Chickens like to eat clean vegetable peels, fruit, cereal, meal worms, bugs, and snails. But please do not feed the chickens at the fair- they are on strict diets and fed twice a day.

1. Hen- adult female chicken
2. Rooster- adult male chicken
3. Pullet- female chicken less than 1 year old
4. Cockerel- male chicken less than 1 year old
5. Bantam (banty)- full grown, yet small chickens

- A “standard” chicken weighs 4-7 pounds.
- A “Bantam” chicken weighs 1-2 pounds.
- Hens will lay almost an egg a day!
- They lay their first egg at about 5 months old.

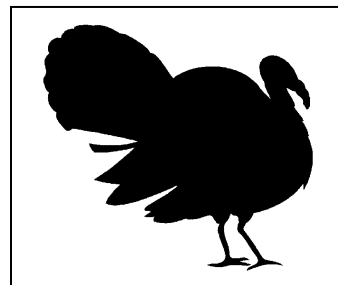


As you move through the Poultry Barn at the Santa Cruz County Fair you will discover there are many different kind of chickens. The reason there are so many chickens is because they have so many uses in the Poultry World. Poultry is the name given to the chickens in the industrial world.

Poultry uses are as follows: egg production, meat production, feather and organic matter.

TURKEY

1. Tom- male turkey from the time of hatching
2. Hen- female turkey from the time of hatching
3. Poults- baby turkey



Other Foul

1. Water foul (ducks and geese)
2. Wild foul (pheasants, doves and quail)

