

COLLECTIONS AND HOBBIES #215
Don McGrain
mcgrainc-fair@yahoo.com

AREA: Open to all California residents
ENTRY DEADLINE: Saturday, August 8, 2009
ENTRY FEE: \$1.50 per entry
RECEIVING DATES: Saturday, August 29, 2009
9 AM - 5 PM
JUDGING: Saturday, September 12, 2009
RELEASE: Monday, September 21, 2009
12 Noon – 7 PM
The Fair is not responsible for items left after 7 PM.
ENTRY FORM: Page 153
SYSTEM OF JUDGING: Danish

RULES:

1. Space is limited and exhibits are assigned/displayed in the order in which exhibits are received, and juried to secure balance and variety in the show. Notify the department chairman in writing on your entry form of any special display needs. Special interest/controversial exhibits are not considered appropriate. Display cases have various heights, widths, and depths. Every attempt will be made to accommodate oversized exhibits.
2. Exhibitors must own entries.
3. Exhibitors are allowed four (4) entries per household.
4. ID TAG: The Fair will provide identification tags. EXHIBITOR MUST HAVE IDENTIFICATION TAG TO DISPLAY THEIR EXHIBITS AND TO PICK UP THEIR EXHIBITS AFTER THE FAIR CLOSES. NO EXCEPTIONS.
5. DISPLAY CARD: Exhibitors must include attractive cards not to exceed fifteen (15) inches square for judging and display. Card must be readable from a three (3) foot distance and must be placed in the case with your display. The card must give the following information:
 - Date the collection or hobby started.
 - Date of the oldest item in the collection and some background information of the items in the collection.
 - How the hobby was started, how the collection was started, i.e., background information, general interest information, especially education or historical information.
6. RESPONSIBILITY: Greatest care will be exercised in handling exhibits. The State of California, the 14th District Agriculture Association, their agents, officers, servants, and employees will not be responsible for the loss or damage to entries. The exhibitor must arrange for insurance if it is desired.

7. The same collections or hobbies may not be entered in consecutive years.
8. The exhibitor must provide all materials, i.e., backdrops, risers, tape, thumbtacks, base cloth, etc. Exhibits will be displayed for 22-23 days. Remember this when choosing whether to use tape vs. tacks.
9. CHANGES: Department will add or delete classes as entries warrant or any changed as the department deems necessary.

JUNIOR SECTION:

1. Entry forms must indicate appropriate information, including the signature or parent or guardian.
2. Age must be listed on the entry form, 17 and under, as of August 8, 2009.
3. Articles for entry must be entirely collected or created by juniors.
4. Junior exhibitors must set up displays: no hands on help from adults.
5. Juniors may not enter in the adult section.

JUDGING AND AWARDS:

1. Judging is not open to public.
2. Ribbons will be awarded for 1st, 2nd and 3rd place in each class.
3. Best of Section will receive a rosette.
4. Best of Show, Junior and Adult, will receive a plaque. The Best of Show award will be judged from the Best of Section winners.
5. EXHIBITORS PICK UP RIBBONS AT THE SAME TIME AS THE EXHIBITS, SEPTEMBER 21ST.
6. Judges decisions are final.
7. In the Junior Section entries will be judged using the Danish System of judging. The Danish System is based upon established standards of quality for each type of exhibit.

PLEASE INCLUDE PHOTO OF EXHIBIT WITH YOUR ENTRY FORM AND ENTRY FEES OR IT WILL NOT BE ACCEPTED.



COLLECTIONS AND HOBBIES CONTINUED #215

PREMIUMS OFFERED PER CLASS		
1 ST RIBBON	2 ND RIBBON	3 RD RIBBON

SECTION 1: HISTORICAL MEMORABILIA

SPECIAL RULES FOR HISTORICAL MEMORABILIA:

- Items must be of historic, military or patriotic value.
- A minimum of four (4) and a maximum of forty (40) items are allowed. Each part of a set is an item. Space is a determining factor in how many items are allowed to be displayed. Special permission may be requested in writing to the department head and attached to the entry form to allow for more items and/or more display space if available.

Classes:

1. Books and/or documents
2. Medals
3. Flags and pennants
4. Photography, pictures, brochures, posters
5. Uniforms and accessories
6. Coins
7. Stamps
8. Other not listed above (please specify)

SECTION 2: ANTIQUES

SPECIAL RULES FOR ANTIQUES:

- Items must be fifty (50) years or older.
- A minimum of four (4) and a maximum of forty (40) items allowed. Each part of a set is an item. Space is a determining factor in how many items are allowed to be displayed. Special permission may be requested in writing to the department head and attached to the entry form to allow for more items and/or more display space if available.

Classes:

1. Bottles
2. Tools
3. Instruments (binoculars, telescopes, sextants, compasses, etc.)
4. Personal Items (razors, eyeglasses, hat pins, clothing, etc.)
5. Cookware and cooking utensils
6. Glassware and plates
7. Silverware
8. Clocks
9. Household Items (knick-knacks, vases, picture frames, dollies, cookie jars, etc.)
10. Toys and dolls
11. Other not listed above (please specify)

SECTION 3: HOBBIES (ADULT) SECTION 4: HOBBIES (JUNIOR)

SPECIAL RULES FOR HOBBIES:

- All entries in this section must be built by the exhibitor.
- A minimum of four (4) and a maximum of forty (40) items are allowed. Each part of a set is an item. Space is a determining factor in how many items are allowed to be displayed. Special permission may be requested in writing to the department head and attached to the entry form to allow for more items and/or more display space if available.

Classes:

1. Wood carving
2. Ceramics
3. Jewelry making
4. Models (kits)
5. Models (scratch built)
6. Doll making
7. Doll houses
8. Bird houses
9. Furniture (miniatures)
10. Legos
11. Other not listed (please specify)

SECTION 5: GENERAL COLLECTION (ADULT) SECTION 6: GENERAL COLLECTION (JUNIOR)

SPECIAL RULES FOR GENERAL COLLECTION:

- A minimum of four (4) and a maximum of forty (40) items allowed. Each part of a set is an item. Space is a determining factor in how many items are allowed to be displayed. Special permission may be requested in writing to the department head and attached to the entry form to allow for more items and/or more display space if available.

Classes:

1. Animals (ceramics, plastic, wood)
2. Animals, stuffed
3. Beanie babies
4. Dolls
5. Buttons, badges, pins
6. Hats
7. Action figures
8. Key chains and magnets
9. Coins
10. Postcards and stamps
11. Spoons and Thimbles
12. Pencils, pens, erasers
13. Miniature vehicles
14. Nature (rock, leaves, butterflies, etc.)
15. Other not listed (please specify)

**COLLECTIONS AND HOBBIES
CONTINUED #215**

PREMIUMS OFFERED PER CLASS		
1 ST RIBBON	2 ND RIBBON	3 RD RIBBON

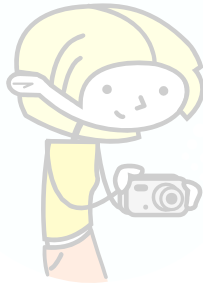
**SECTION 7: THEMES (ADULT)
SECTION 8: THEMES (JUNIOR)**

SPECIAL RULES FOR THEMES:

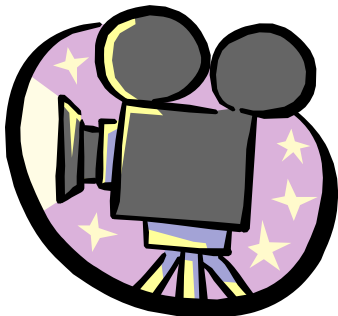
- A minimum of four (4) and a maximum of forty (40) items allowed. Each part of a set is an item. Space is a determining factor in how many items are allowed to be displayed. Special permission may be requested in writing to the department head and attached to the entry form to allow for more items and/or more display space if available.
- All items must be directly related to one (1) theme only (i.e., Coca-Cola, star trek, domestic cats, specific breeds of dogs, etc.)

Classes:

1. Cartoon characters
2. Television shows
3. Movies
4. Animals, birds
5. Brand labels (McDonalds, Coca-Cola, etc.)
6. Other not listed (please specify)



**PLEASE INCLUDE PHOTO OF
COLLECTION WITH ENTRY FORM
AND ENTRY FEE!**



**HOME BREW DEPARTMENT #170
Mia Bossie
(831) 336-4569**

AREA: Open to amateur brewers from Santa Cruz, Monterey, Santa Clara, San Benito, and San Mateo counties.

ENTRY DEADLINE: August 30, 2009 with beer

ENTRY FEE: \$2.50 per entry

RECEIVING DATES: Bottles of beer, with I.D. label attached, and placed in a six-pack holder to be delivered to:
Fair office:
August 29th, 9 AM – 5 PM
August 30th, 12 Noon – 5 PM
7 Bridges Cooperative Home Brew Shop:
325A River Street, Santa Cruz
August 24th – 28th,
2:30 PM to 6:30 PM (Mon. – Wed.)
10:30 AM to 6:30 PM (Thurs. – Sat.)
Printrex
276 East Gish Road, San Jose
August 24th – 28th, 8 AM – 4 PM
Santa Cruz Mountain Brewers
Swift Street Courtyard, Santa Cruz Westside
August 24th – 28th, 1:30 PM – 5:30 PM
September 12, 2009, Paddy Smith Park
Page 155

JUDGING: September 12, 2009, Paddy Smith Park
ENTRY FORM: Page 155
SYSTEM OF JUDGING: Danish

- INFORMATION:**
- The Santa Cruz County Fair Homebrew competition is an A.H.A sanctioned event. The contest is open to amateur brewers from Santa Cruz, Monterey, Santa Clara, San Benito and San Mateo counties.
 - Submit one (1) entry (three 12oz. bottles) per class, but as many classes as you would like. Entries will be judged based on BJCP style guidelines, and classes are based on BJCP style guidelines. Bottles must be free of commercial labels or any identifying marks (soda caps must be colored over with black ink). **A label must be attached with a rubber band (no tape or glue) stating the class of beer, the brewer's name, address and the words "not for sale".**
 - Following the judging, a tasting will be held at the Paddy Smith Park, 1 PM to 3 PM, open to all judges and contestants only.
 - All entries become Fair property. We assume no responsibility for returning bottles to participants.
 - A plaque will be awarded for Best of Show. The American Home Brewers Association will award ribbons for 1st, 2nd and 3rd place in each class for all entries meeting award standard recommendations. A rosette will be awarded for the best of label and best incorporation of the Fair theme: "Barnyard Beach Party".