

**COLLECTIONS AND HOBBIES  
CONTINUED #215**

PREMIUMS OFFERED PER CLASS		
1 <sup>ST</sup> RIBBON	2 <sup>ND</sup> RIBBON	3 <sup>RD</sup> RIBBON

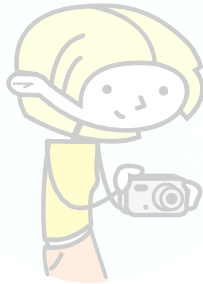
**SECTION 7: THEMES (ADULT)  
SECTION 8: THEMES (JUNIOR)**

**SPECIAL RULES FOR THEMES:**

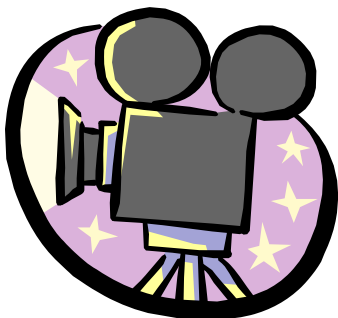
- A minimum of four (4) and a maximum of forty (40) items allowed. Each part of a set is an item. Space is a determining factor in how many items are allowed to be displayed. Special permission may be requested in writing to the department head and attached to the entry form to allow for more items and/or more display space if available.
- All items must be directly related to one (1) theme only (i.e., Coca-Cola, star trek, domestic cats, specific breeds of dogs, etc.)

**Classes:**

1. Cartoon characters
2. Television shows
3. Movies
4. Animals, birds
5. Brand labels (McDonalds, Coca-Cola, etc.)
6. Other not listed (please specify)



**PLEASE INCLUDE PHOTO OF  
COLLECTION WITH ENTRY FORM  
AND ENTRY FEE!**



**HOME BREW DEPARTMENT #170  
Mia Bossie  
(831) 336-4569**

**AREA:**

Open to amateur brewers from Santa Cruz, Monterey, Santa Clara, San Benito, and San Mateo counties.

**ENTRY DEADLINE:**

August 30, 2009 with beer

**ENTRY FEE:**

\$2.50 per entry

**RECEIVING DATES:**

Bottles of beer, with I.D. label attached, and placed in a six-pack holder to be delivered to:

Fair office:

August 29<sup>th</sup>, 9 AM – 5 PM

August 30<sup>th</sup>, 12 Noon – 5 PM

7 Bridges Cooperative Home Brew Shop:  
325A River Street, Santa Cruz

August 24<sup>th</sup> – 28<sup>th</sup>,

2:30 PM to 6:30 PM (Mon. – Wed.)

10:30 AM to 6:30 PM (Thurs. – Sat.)

Printrex

276 East Gish Road, San Jose

August 24<sup>th</sup> – 28<sup>th</sup>, 8 AM – 4 PM

Santa Cruz Mountain Brewers

Swift Street Courtyard, Santa Cruz  
Westside

August 24<sup>th</sup> – 28<sup>th</sup>, 1:30 PM – 5:30 PM

September 12, 2009, Paddy Smith Park  
Page 155

**JUDGING:**

**ENTRY FORM:**

**SYSTEM OF JUDGING:**

Danish

**INFORMATION:**

- The Santa Cruz County Fair Homebrew competition is an A.H.A sanctioned event. The contest is open to amateur brewers from Santa Cruz, Monterey, Santa Clara, San Benito and San Mateo counties.
- Submit one (1) entry (three 12oz. bottles) per class, but as many classes as you would like. Entries will be judged based on BJCP style guidelines, and classes are based on BJCP style guidelines. Bottles must be free of commercial labels or any identifying marks (soda caps must be colored over with black ink). **A label must be attached with a rubber band (no tape or glue) stating the class of beer, the brewer's name, address and the words "not for sale".**
- Following the judging, a tasting will be held at the Paddy Smith Park, 1 PM to 3 PM, open to all judges and contestants only.
- All entries become Fair property. We assume no responsibility for returning bottles to participants.
- A plaque will be awarded for Best of Show. The American Home Brewers Association will award ribbons for 1<sup>st</sup>, 2<sup>nd</sup> and 3<sup>rd</sup> place in each class for all entries meeting award standard recommendations. A rosette will be awarded for the best of label and best incorporation of the Fair theme: "Barnyard Beach Party".

# HOMEBREW CONTINUE #170

PREMIUM OFFERED PER CLASS		
1 <sup>ST</sup> RIBBON	2 <sup>ND</sup> RIBBON	3 <sup>RD</sup> RIBBON

## SECTION 1: HOME BREW

### Classes:

1. LIGHT LAGER
  - a. Lite American Lager
  - b. Standard American Lager
  - c. Premium American Lager
  - d. Munich Helles
  - e. Dortmunder Export
2. PILSNER
  - a. German Pilsner (Pils)
  - b. Bohemian Pilsner
  - c. Classic American Pilsner
3. EUROPEAN AMBER LAGER
  - a. Vienna Lager
  - b. Oktoberfest/Marzen
4. DARK LAGER
  - a. Dark American Lager
  - b. Munich Dunkel
  - c. Schwarzbier
5. BOCK
  - a. Maibock/Helles Bock
  - b. Traditional Bock
  - c. Doppelbock
  - d. Eisbock
6. LIGHT HYBRID BEER
  - a. Cream Ale
  - b. Blonde Ale
  - c. Kolsch
  - d. American Wheat or Rye Beer
7. AMBER HYBRID BEER
  - a. North German Altbier
  - b. California Common Beer
  - c. Dusseldorf Altbier
8. ENGLISH PALE ALE
  - a. Standard/Ordinary Bitter
  - b. Special/Best/Premium Bitter
  - c. Extra Special/Strong Bitter (English Pale Ale)
9. SCOTTISH AND IRISH ALE
  - a. Scottish Light 60/-
  - b. Scottish Heavy 70/-
  - c. Scottish Export 80/-
  - d. Irish Red Ale
  - e. Strong Scotch Ale
10. AMERICAN ALE
  - a. American Pale Ale
  - b. American Amber Ale
  - c. American Brown Ale
11. ENGLISH BROWN ALE
  - a. Mild
  - b. Southern English Brown Ale
  - c. Northern English Brown Ale
12. PORTER
  - a. Brown Porter
  - b. Robust Porter
  - c. Baltic Porter
13. STOUT
  - a. Dry Stout
  - b. Sweet Stout
  - c. Oatmeal Stout
  - d. Foreign Extra Stout
  - e. American Stout
  - f. Russian Imperial Stout
14. INDIA PALE ALE (IPA)
  - a. English IPA
  - b. American IPA
  - c. Imperial IPA
15. GERMAN WHEAT AND RYE BEER
  - a. Weizen/Weissbier
  - b. Dunkelweizen
  - c. Weizenbock
  - d. Roggenbier (German Rye Beer)
16. BELGIAN AND FRENCH ALE
  - a. Witbier
  - b. Belgian Pale Ale
  - c. Saison
  - d. Biere de Garde
  - e. Belgian Specialty Ale
17. SOUR ALE
  - a. Berliner Weisse
  - b. Flanders Red Ale
  - c. Flanders Brown Ale/Oud Bruin
  - d. Straight (Unblended) Lambic
  - e. Gueuze
  - f. Fruit Lambic
18. BELGIAN STRONG ALE
  - a. Belgian Blonde Ale
  - b. Belgian Dubbel
  - c. Belgian Tripel
  - d. Belgian Golden Strong Ale
  - e. Belgian Dark Strong Ale
19. STRONG ALE
  - a. Old Ale
  - b. English Barleywine
  - c. American Barleywine
20. FRUIT BEER
21. SPICE/HERB/VEGETABLE BEER
  - a. Spice, Herb, or Vegetable Beer
  - b. Christmas/Winter Specialty Spiced Beer
22. SMOKE-FLAVORED & WOOD-AGED BEER
  - a. Classic Rauchbier
  - b. Other Smoked Beer
  - c. Wood-Aged Beer
23. SPECIALTY BEER
24. TRADITIONAL MEAD
  - a. Dry Mead
  - b. Semi-Sweet Mead
  - c. Sweet Mead
25. MELOMEL (FRUIT MEAD)
  - a. Cyser (Apple Melomel)
  - b. Pymment (Grape Melomel)
  - c. Other Fruit Melomel
26. OTHER MEAD
  - a. Metheglin
  - b. Braggot
  - c. Open Category Mead

## HOMEBREW CONTINUE #160

PREMIUMS OFFERED PER CLASS		
1 <sup>ST</sup> RIBBON	2 <sup>ND</sup> RIBBON	3 <sup>RD</sup> RIBBON

27. STANDARD CIDER AND PERRY
  - a. Common Cider
  - b. English Cider
  - c. French Cider
  - d. Common Perry
  - e. Traditional Perry
28. SPECIALTY CIDER AND PERRY
  - a. New England Cider
  - b. Fruit Cider
  - c. Apple Wine
  - d. Other Specialty Cider/Perry

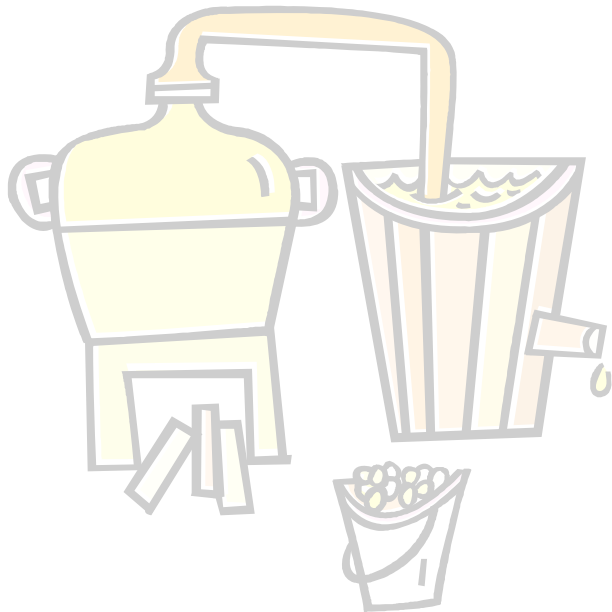
### SECTION 2: BEER LABELS

#### SPECIAL INFORMATION FOR BEER LABELS:

- There is no entry fee required
- Enter one empty bottle with glued label
- Entries will be displayed the week of Fair

#### Classes:

1. Beer labels – general
2. Beer labels – Fair theme



## AMATEUR WINEMAKING #175

**Charlie Rice**  
(831) 818-8745

#### COMMITTEE MEMBERS:

Barbara Donofrio	Ron Jones
Dave Donofrio	Jerry Starr
Mary Lindsay	Craig Vossbrinck

**AREA:** Open to amateur winemakers from Santa Cruz County and adjacent areas.

**ENTRY DEADLINE:** Bottles of wine, with I.D. label attached, must be delivered beginning July 27, 2009 with a final deadline of August 8, 2009.

**ENTRY FEE:** \$2.50 per entry

**JUDGING:** August 15, 2009

**RELEASE:** Score sheets may be picked up on Saturday, September 12, 2009, at 2 PM at the Paddy Smith Park at the Fairgrounds. Page 157

**ENTRY FORM:** Page 157

**SYSTEM OF JUDGING:** Danish

#### AMATEUR WINEMAKING INFORMATION:

- Home winemakers are invited to bring their wines to the Fairgrounds, where an impartial panel of experts will judge them. Entries become property of the Fair. Bottles lacking the required information on a paper label will be disqualified. We assume no responsibility for returning wine to participants. Results of the competition will be announced and participants will have an opportunity to taste the wines on Saturday, September 12, at 2 PM at Paddy Smith Park at the Fairgrounds. Entrants may claim their score sheets at that time. Be sure to include complete and accurate information on the entry form, especially vintage, if applicable
- Two bottles 750 ml. or 3 bottles of 375 ml. must be provided for each entry.
- The following information **MUST** appear in a label somewhere on each bottle.
  - \* Name of exhibitor
  - \* Address, telephone number
  - \* E-mail address
  - \* Type of wine, by section and class
  - \* Vintage (if applicable)
  - \* The words "not for sale"
- Prize winning bottles (empty) will be exhibited at the Fair.